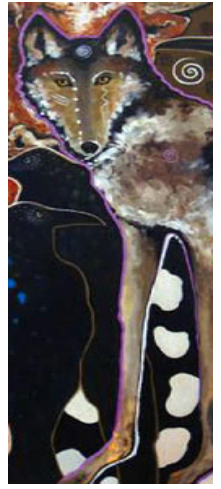


Virginia Maria Romero **©2009



Mexican Wolf Essay Contest

Win an *iPod touch!*
****Open to Grades 6-8****



Mexican wolves are returning to New Mexico.

What do you think are the most important effects (good and/or bad) wolves will have on: (1) the plants & other wildlife of New Mexico and (2) you & your family.

Prizes:

- First Place- An Apple iPod touch and a day in "wolf country" with Steel Horse Adventure tours
- Second place entry and honorable mentions (2) will receive gifts from local sponsors. Some of the potential items include a new bike, art prints, and much more.
- **EVERYBODY!**--If your entry meets minimum standards, you will be entered into a drawing to spend a day in wolf country with Steel Horse Adventure Tours, and other great prizes.
- Even Teachers can win --Teachers with the most student entries will get to go on a private tour of wolf country!

Rules:

- Your essay should answer the question above.
- Middle school students (6th – 8th grade) or home-schooled students (ages 10-14) in southwestern New Mexico are eligible.
- Essays should be 500-800 words in length, and neatly typed.
- Please include your name, mailing address, phone number(s), email, name of school, name of teacher, & grade level.
- High scoring essays will be displayed at the Southwest Environmental Center, on our website & reprinted in our newsletter.

Deadline:

Entries must be received by **November 6, 2009** at 5:00 p.m. Please submit your essay by email (preferred) to paul@wildmesquite.org, or hand-deliver to:
Southwest Environmental Center, 275 N Downtown Mall, Las Cruces, NM 88001

Awards:

Winners will be announced at an awards ceremony to be held at the Rio Grande Theatre in Las Cruces, tentatively scheduled for November 14, at 7 p.m.



For More Information

Contact the Southwest Environmental Center at 575-522-5552 or paul@wildmesquite.org. To get started learning more about Mexican Wolves go to: www.mexicanwolves.org and <http://www.fws.gov/southwest/es/mexicanwolf>

Judging

- Content (accurate presentation of wolf biology, history, status) - 50 points
- Logic & persuasiveness of argument - 30 points
- Quality of writing - 20 points



Las Cruces Museum of Natural History